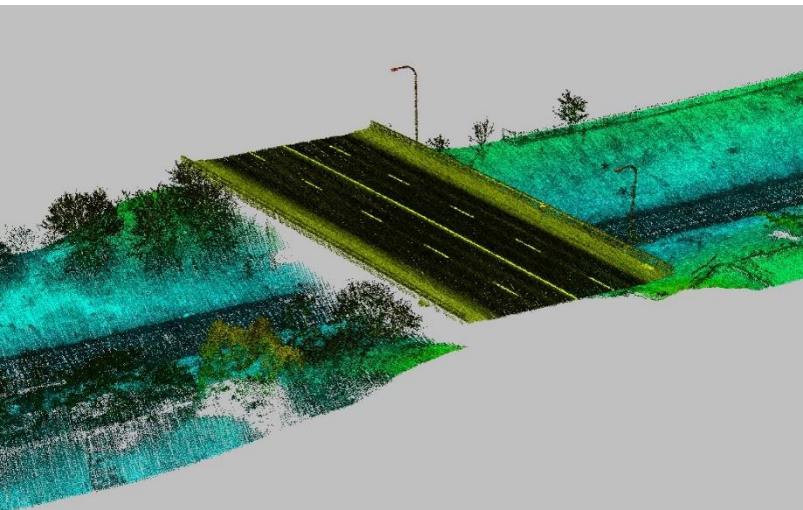


In a partnership with an industry-leading UAV-based LiDAR collector, Lux Modus completed classification of multiple rail locations and provided feature extraction of the top of rail for the customer.

Various locations across Canada were scanned for multiple projects but all data was processed and classified within days of delivery to Lux Modus.

LiDAR with imagery is an ideal tool for rail corridor mapping and modeling. Whether mounted on a rail car or collected via a UAV or other aircraft, LiDAR can provide the detail and accuracy required for asset inventoring along the corridor, infrastructure and environmental assessments, and investigations as well as surveillance and monitoring.

For customers who do not have an enterprise GIS or other geospatial visualization tools, the LuxWeb platform is the ideal low cost and easy to use point cloud and 3D visualization environment.



*The 3D Digital Twin is more than point clouds and images, it's GIS and CAD data-ready to be consumed via web maps and desktop / enterprise geospatial systems from which complex analysis can be conducted and custom reports generated daily.*